

BBLST5—Standard duty blade 5'
BBLST6—Standard duty blade 6'
BBLST7—Standard duty blade 7'



MAHINDRA ***Rear Blade***

* ASSEMBLY
* OPERATION

* REPAIR PARTS
* MAINTENANCE

CAUTION:
READ & FOLLOW ALL SAFETY RULES & INSTRUCTIONS BEFORE
OPERATING YOUR EQUIPMENT



LIMITED WARRANTY

Conditions and Products Covered:

BERCOMAC guarantees any part of the product or accessory manufactured by BERCOMAC and found in the reasonable judgment of BERCOMAC to be defective in material and or workmanship will be repaired or replaced by an authorized dealer without charge up to our maximum labor rates and pre-established times. For replacement parts only standard ground freight services are covered. This warranty applies to the products bought and used in North America.

Warranty Period

(from date of the original retail purchase)

- Residential or light commercial (regular agricultural) use: 1 year
- Commercial regular or intense use (intense agricultural), industrial or rental use: 90 days

Exceptions Noted Below; the following items have a different coverage conditions and limited time:

- Tire Chains:
 - 90 days residential or light commercial use
 - No warranty for other application
- Engines: Will vary as per the manufacturer
Please refer to the engine manufacturer's warranty statement included with the unit. BERCOMAC is not authorized to handle warranty adjustments on engines.

Items and Conditions NOT Covered:

This warranty does not cover the following:

- Pick-up or delivery charges or in-home services fees.
- Any damage or deterioration of the unit, parts and or finish of these due to normal use, wear and tear, or exposure.
- Cost of regular use or maintenance service or parts, such as gas, oil, lubricants, tune-up parts, and adjustments.
- Any part or accessory which has been altered, modified, misused, neglected, accidentally damaged or not properly installed, maintained, stored or repaired not in accordance with the instructions in the owner's manual.
- Repair due to normal wear and or any wear items such as shear pins, bolts, belts, winch cable, cutting edge, skid shoes, etc.
- Expedited freight fee services for replacement parts.
- Shear bolts and shear pins are to be considered as a preventive measure not as an assured protection, any damages resulting from the lack of shear bolts breakage are not covered.

NOTE: All warranty work must be performed by an authorized dealer using original (manufacturer) replacement parts.

NOTE: Bercomac reserves the right to change or improve the design of any part or accessory without assuming any obligation to modify any product previously manufactured.

Instructions for Obtaining Warranty Services: Contact the Mahindra dealer where equipment was purchased or any other Mahindra service dealer to arrange service at their dealership. To locate a dealer convenient to you, access our website at www.mahindrausa.com. Don't forget to bring your proof of purchase (sales receipt) to the Mahindra dealer.

Owner's Responsibilities:

BERCOMAC's defective equipment or part must be returned to an authorized dealer within the warranty period for repairs. In the event that defective merchandise must be returned to manufacturer for repairs, freight fees are prepaid and a written authorization from BERCOMAC must be obtained by dealer prior to the shipment. This warranty extends only to equipment operated under normal conditions. To validate a warranty claim, it is the user's responsibility to maintain and service the unit as specified in the owner's manual or to have the unit serviced at their dealer at their expense.

General Conditions:

The sole liability of BERCOMAC with respect to this warranty shall be strictly and exclusively repair and replacement as mentioned herein. BERCOMAC shall not have any liability for any other costs, loss or damage, including but not limited to, any incidental or consequential loss or damage.

Taking advantage of the warranty does not in any way extend the length or renewal of the warranty.

In particular, without being limited to, BERCOMAC shall have no liability or responsibility for:

- Travel time, overtime, after hours time or other extraordinary repair charges or relating to repairs and or replacements outside of normal business hours.
- Rental of like or similar replacement equipment during the period of any, repair or replacement work.
- Any communicating or travel charges.
- Loss or damage to person or property other than that covered by the terms of this warranty.
- Any claims for lost revenue, lost profit or any similar costs as a result of damage or repair.
- Attorney's fees.

BERCOMAC's responsibility in respect to claims is limited to making the required repairs or replacement without charge up to our maximum labor rates and pre-established times and no claim of breach of warranty shall be cause for cancellation or rescission of the contract of sale of any product or accessory. In no event shall recovery of any kind be greater than the amount of the purchase price of the product sold.

This warranty gives you specific legal rights. You may also have other rights, which vary from state to state.

TABLE OF CONTENTS

	PAGE
INTRODUCTION	1
SAFETY PRECAUTIONS	2
SAFETY DECALS	4
ASSEMBLY	
Assembly instructions	5
Step 1 Hitch assembly	6
Step 2 3 point hook up	7
ADJUSTMENTS	9
OPERATION	11
TRANSPORT	14
MAINTENANCE & STORAGE	15
PARTS BREAKDOWN AND PARTS LIST	
Rear Blade Standard duty 5'	16
Rear Blade Standard duty 6'	19
Rear Blade Standard duty 7'	21
TORQUE SPECIFICATION TABLE	23

INTRODUCTION

TO THE PURCHASER

This new accessory was carefully designed to give years of dependable service. This manual has been provided to assist in the safe operation and servicing of your attachment.

NOTE: All photographs and illustrations in the manual may not necessarily depict the actual models or attachment, but are intended for reference only and are based on the latest product information available at the time of publication.

Familiarize yourself fully with the safety recommendations and operating procedures before putting the machine to use. Carefully read, understand and follow these recommendations and insist that they be followed by those who will use this attachment.



THIS SAFETY ALERT SYMBOL IDENTIFIES AN IMPORTANT SAFETY MESSAGE IN THIS MANUAL THAT HELPS YOU AND OTHERS AVOID PERSONAL INJURY OR EVEN DEATH. DANGER, WARNING, AND CAUTION ARE SIGNAL WORDS USED TO IDENTIFY THE LEVEL OF HAZARD. HOWEVER, REGARDLESS OF THE HAZARD, BE EXTREMELY CAREFUL.

DANGER: Signals an extreme hazard that will cause serious injury or death if recommended precautions are not followed.

WARNING: Signals a hazard that may cause serious injury or death if the recommended precautions are not followed.

CAUTION: Signals a hazard that may cause minor or moderate injury if the recommended precautions are not followed.

Record your attachment serial number and purchase date in the section reserved below (there is no serial number on the subframe). Your dealer requires this information to give you prompt, efficient service when ordering replacement parts. Use only genuine parts when replacements are required.

If warranty repairs are required please present this registration booklet and original sales invoice to your selling dealer for warranty service.

This manual should be kept for future reference.

Please check if you have received all the parts for your kit with the list of the bag and the list of the box.

SERIAL NUMBER : _____
(IF APPLICABLE)

MODEL NUMBER: _____

PURCHASE DATE : _____



SAFETY PRECAUTIONS



Careful operation is your best insurance against an accident. Read this section carefully before operating the vehicle and accessory. This accessory is capable of amputating hands and feet and throwing objects. Failure to observe the following safety instructions could result in serious injury. All operators, no matter how experienced they may be, should read this and other manuals related to the vehicle and accessory before operating. It is the owner's legal obligation to instruct all operators in safe operation of the accessory to prevent accidents or injuries.

These are common practices that may or may not be applicable to the product described in this manual.

GLOSSARY:

In this manual, right and left sides are determined by sitting on the seat of the vehicle facing forward.

In this manual, "accessories" means attachments (snowblower, rotary broom, blade, etc.) that you install on the vehicle (lawn tractors, A.T.V. s etc).

TRAINING:



This symbol, "Safety Alert Symbol", is used throughout this manual and on the accessory's safety labels to warn of the possibility of serious injury. Please take special care in reading and understanding the safety precautions before operating the vehicle and accessory.

1. Read this owner's manual carefully. Be thoroughly familiar with the controls and proper use of the vehicle and accessory. Know how to stop the unit and disengage the controls quickly.
 2. Never allow children to operate the vehicle nor the accessory. Never allow adults to operate the vehicle nor the accessory without proper instructions. Local regulations restrict the age of the operator. Children are often attracted to accessories. Never assume children will stay in place where you have last seen them. Keep children under surveillance of a responsible adult at all times.
 3. No one should operate the vehicle nor the accessory while intoxicated or while taking medication that impairs the senses or reactions. The operator should, if taking over the counter drugs, seek medical advice on whether he/she can safely operate the equipment.
 4. Keep the area of operation clear of all people, particularly small children and pets.
 5. Never start or operate the accessories except from the operator's station on the power unit except if this is impossible.
- ### **PREPARATION:**
1. Thoroughly inspect the area where the accessory is to be used and remove door mats, all foreign objects and the like which could be pick up and projected by accessory.
 2. For motorized accessories, disengage all clutches and shift into neutral before starting engine.
 3. Prepare for emergencies. Be prepared if a fire starts. Keep first aid kit and fire extinguisher handy. Keep emergency phone numbers (doctor, ambulance, ect) near a phone
 4. Do not operate the accessory without wearing adequate clothing and safety equipment. Long hair, loose clothing or jewelry can get caught in moving parts. Wear footwear that will improve footing on slippery surfaces.
 5. Handle fuel with care, it is highly flammable and vapors are explosive.
 - a) Extinguish all cigarettes, cigars, pipes and other sources of ignition.
 - b) Use approved fuel container.
 - c) Never add fuel to a running engine or hot engine.
 - d) Fill fuel tank outdoors with extreme care. Never fill fuel tank indoors.
 - e) Never fill containers inside a vehicle, or on a truck or a trailer bed with a plastic liner. Always place containers on the ground, away from your vehicle, before filling.
 - f) When practical, remove gas-powered equipment from the truck or trailer and refuel it on the ground. If this is not possible, then refuel such equipment on a trailer with a portable container, rather than directly from a gasoline dispenser nozzle.
 - g) Keep the nozzle in contact with the rim of the fuel tank or container opening at all times, until refueling is complete. Do not use a nozzle lock-open device.
 - h) Never overfill fuel tank. Replace fuel cap securely and wipe up spilled fuel.
 - i) If fuel is spilled on clothing, change clothing immediately.
 6. Never attempt to make any adjustments while the engine (motor) is running (except when specifically recommended by manufacturer).
 7. Let the vehicle and accessory adjust to outdoor temperatures before using.
 8. Never use an accessory without proper guards, plates, or other safety protective devices in place
 9. Always make sure to wear the appropriate safety equipment required (glasses, muffs, mask...) for each type of product. See operation section.
 10. Always make sure of having safe traction on the vehicle by using the recommended accessories (chains, A.T.V. tracks, counterweights...). See operation section.
 11. Always make sure all components are correctly installed. (driveline securely attached and locked at both ends, belts properly installed...)
 12. If applicable, always handle the winch cable with thick leather gloves.
 13. **Never modify the accessory or any part without the written consent from the manufacturer.**



SAFETY PRECAUTIONS



OPERATION:

1. Do not put hands or feet near, under or inside rotating parts.
2. Exercise extreme caution when operating on or crossing gravel drives, walks or roads. Stay alert for hidden hazards or traffic. Do not carry passengers.
3. After striking a foreign object, stop the engine (motor), disconnect the wire from the spark plug(s) and keep wire away to prevent accidental starting. Thoroughly inspect the accessory for any damage and repair damage before restarting and using the accessory.
4. If the unit should start to vibrate abnormally, stop the engine (motor) and check immediately for the cause. Vibration is generally a warning of trouble. Do not use equipment until properly repaired.
5. Take all possible precautions when leaving the vehicle unattended. Disengage the power take-off, lower the attachment, place the transmission into neutral, set the parking brake, stop the engine and remove the ignition key.
6. Do not run the engine indoors, except when starting the engine and for transporting in or out of the building. Do not operate or let motor run in a storage area without ventilation because gas contains carbon monoxide which is odorless, colorless and can cause death.
7. Never use the accessories across the face of slopes, go from top to bottom. Exercise extreme caution when using equipment on slopes, on wet ground or near drop-off. Do not attempt to use accessory on a steep slope.
8. Never tolerate bystanders in the working zone. Never use an accessory in the direction of bystanders, it might throw gravel or debris that can hurt people or damage property.
9. Never operate the accessory at high transport speeds on slippery surfaces. Use care when backing up.
10. Do not carry passengers.
11. Disengage power to the accessory when it is transported or not in use.
12. Never operate the accessory without good visibility or light.
13. Keep the accessory away from heat sources or flames.
14. If applicable, never handle the winch cable or hook while under tension.
15. Never use accessory if it has been dropped or damaged. Repair if necessary before re-using.

MAINTENANCE AND STORAGE

1. When cleaning, repairing or inspecting the vehicle and accessory: park on a solid level ground, disengage drives, lower implement, set parking brake, stop the engine, remove ignition key, and wait that all moving parts have stopped. For gasoline engine, disconnect wire from the spark plug(s) and keep wire away to prevent accidental starting.
2. Check all the bolts and components at frequent intervals to make sure that they are properly tightened and in safe working condition.
3. Never store a motorized accessory with fuel in the fuel tank inside a building where ignition sources are present such as hot water and space heaters, clothes dryers, and the like. Allow the engine to cool before storing in any enclosure.
4. Always refer to the owner's manual when you store the accessory and vehicle for a prolonged or an unspecified length of time.
5. Maintain or replace safety and instruction labels, as necessary.
6. For winter accessories, (if applicable), let the engine run for a few minutes after clearing snow in order to prevent the rotary parts from freezing.
7. Inspect the vehicle's and accessory's air filter (if applicable) every day. Clean it or replace it as necessary. Change the oil more often when working in dusty conditions. See the vehicle's and accessory's owner's manual.

TRANSPORT

1. Review Transport Safety instructions in vehicle manual before moving or hauling.
2. Check with local authorities regarding transport on public roads and off road. Obey all applicable laws and regulations.
3. Make sure all lights and reflectors that are required by the local highway and transport authorities (example : SMV (Slow Moving Vehicle)) are in place, are clean, and can be seen clearly by all overtaking and oncoming traffic.
4. Never have the equipment in operation during transport.
5. Always travel at a safe speed.

SAFETY LABELS

REPLACE IF DECALS ARE DAMAGED
FOR DECAL LOCATION SEE PART LIST

⚠ CAUTION ⚠

TO AVOID INJURY OR MACHINE DAMAGE:

- Read and understand owner's manual before using machine. Contact dealer for manual.
- Keep others away during operation.
- DO NOT allow riders.
- Lower implement to the ground, stop tractor engine, set park brake, remove ignition key BEFORE servicing, adjusting, repairing or unhooking.
- DO NOT put any part of the body under the implement.

⚠ ATTENTION ⚠

POUR ÉVITER DES BLESSURES OU DOMMAGES À L'ÉQUIPEMENT :

- Lire et comprendre les instructions dans le manuel du propriétaire. Communiquez avec le détaillant pour le manuel.
- Gardez les gens à l'écart lorsqu'en opération.
- NE PAS accueillir de passagers.
- Abaissez l'accessoire par terre, arrêtez le moteur du tracteur, appliquez le frein de stationnement, enlevez la clé de contact AVANT de débiter tout ajustement, réparation ou pour déconnecter l'équipement.
- NE PAS placer aucune partie du corps sous l'accessoire.

107650

DECAL # 107650

ASSEMBLY

ASSEMBLY INSTRUCTIONS

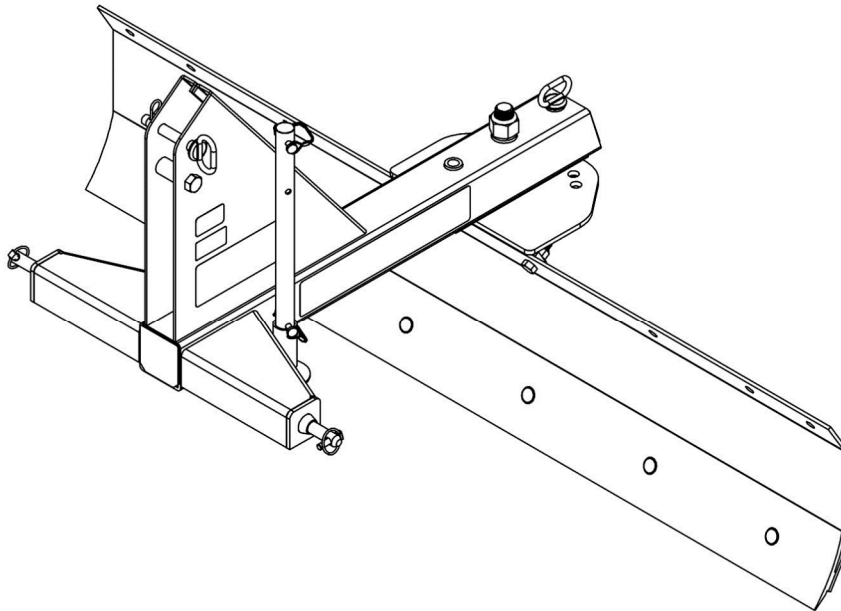
IMPORTANT: UNLESS OTHERWISE SPECIFIED TORQUE ALL BOLTS ACCORDING TO TORQUE SPECIFICATION TABLE (SEE TABLE OF CONTENTS) WHEN STATED: TIGHTEN FIRMLY. REFER TO PARTS BREAKDOWN SECTION FOR PART IDENTIFICATION.

NOTE: In this manual, the right and left side is determined being seated on the driver's seat facing forward.

TRACTOR REQUIREMENTS

The rear blade was designed for a 3-point category 1 hitch. For tractors with horsepower up to 40 HP.

Remove the Rear blade from the shipping crate.



Overall view

ASSEMBLY

STEP 1 BLADE ASSEMBLY



DANGER



TO PREVENT INJURIES:

Rear Blade components are very heavy and can injure a person should they suddenly fall from a lifting device or improvised supports. Always make certain components are properly secured before lifting and properly supported on the ground before removing lifting device. Always keep feet and other extremities clear of areas where components can fall.

Insert blade pivot (item 1) through pivot hole in main frame (item 2).

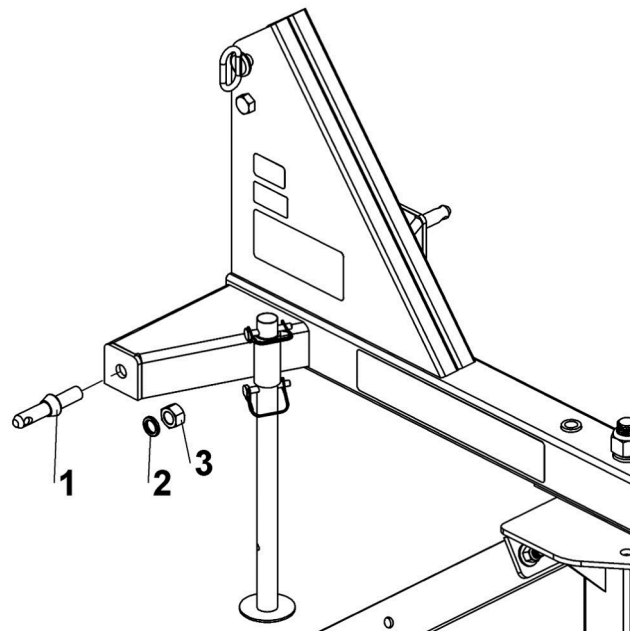
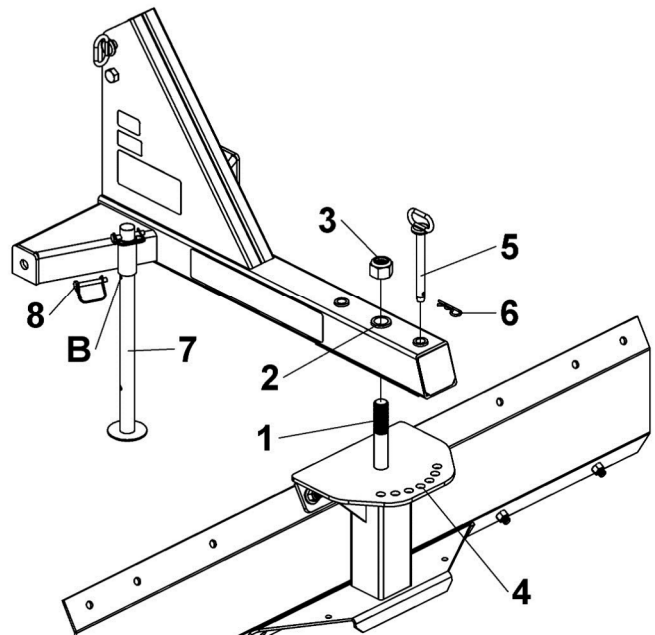
Secure the blade pivot into the main frame using a nylon insert lock nut 1-1/8" (item 3)

Screw until vertical play is removed from pivot shaft. Hint : screw until blade cannot rotate freely then unscrew 1/8 turn or until the blade is able to rotate freely.

Line up turntable holes in blade assembly (item 4) and mainframe assembly and insert lock pin (item 5). Then secure lock pin with cotter pin (item 6).

Lower parking stand (item 7) by pulling the lock pin (item 8) in hole B.

Install the pin (item 1) on both side of the blade using lock washer (item 2) and nut (item 3) as illustrated.



ASSEMBLY

STEP 2 3 POINT HOOK UP

IMPORTANT:

A 3 point category 1 hitch is required.
The lower arms of the 3 point hitch must be stabilized to prevent side to side movement. Most tractors have sway blocks or adjustable chains for this purpose.
Slowly back up the tractor to the implement and use the tractor's 3 point hydraulic control.



WARNING



TO PREVENT INJURIES:

Park the vehicle on a flat surface in a well ventilated area.

Disengage the P.T. O.

Apply parking brake.

Stop the engine and remove the ignition key.

Wait until all moving parts have stopped before leaving the driver's seat.

Attach tractor's lower arms (item 1) on the pins (item 2) and secure with lynch pins (item 3)

Connect top center link (item 4) to the upper hitch using a pin and hairpin (item 5) as shown in figure.

Return to the tractor and operate the tractor's 3-point hydraulic control up until the blade comes off the ground.

Lift the parking stand.

Return to the tractor and slowly operate the tractor's 3-point hydraulic control up and down to check for clearance between tires, frame drawbar, etc.

Move or remove the draw bar if it interferes with the implement.



DANGER



TO PREVENT INJURIES:

Hooking up equipment to the tractor is dangerous and can result in serious injury or death. **Do not** allow anyone to stand between the tractor and the implement while backing up to the equipment. **Do not** operate hydraulic 3-point lift controls while someone is directly behind tractor or near the implement.

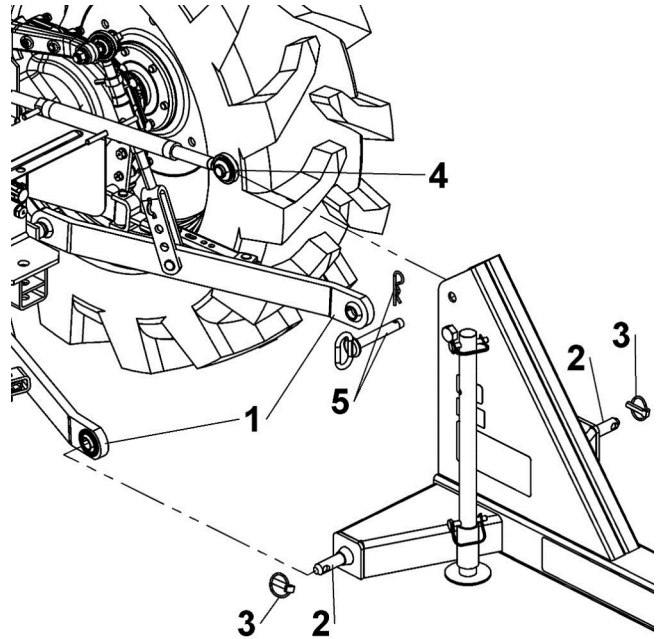


DANGER



TO PREVENT INJURIES:

Always check all hardware for tightness before using or working around the blade. The moldboard will fall off if blade pivot nut is missing.



ASSEMBLY

LEVELING THE REAR BLADE

Manually adjust one of the two lower lift arms up or down to level the implement from left to right.

Manually adjust the length of the top-link to level the implement from front to rear.

Ensure that the lower lift arms are blocked to prevent excessive movement.

CHECK INTERFERENCE

If required, offset blade to desired setting. Refer to “**Blade Offset**” in the Adjustment section for instructions.

If required, tilt end of blade to desired setting. Refer to “**Blade Tilt**” in the Adjustment section for instructions

Raise blade off the ground and angle blade as far as possible towards the right rear tractor tire. Refer to “**Blade Angling**” in the Adjustment section for instructions.

Return to the tractor and slowly raise 3-point lift arms fully up and down to make sure blade does not make contact with tractor tire, drawbar, and any other equipment on the tractor.

- Move or remove drawbar if it interferes with blade.
- Set tractor control lever stop to restrict lifting height if blade interferes with tractor tire.

Do the same, but angle blade as far as possible towards the left rear tractor tire.

ADJUSTMENTS

BLADE ADJUSTMENTS

There are 5 adjustments that can be made manually to the blade. They are blade offset, angling, reversing, tilt, and pitch.



DANGER



TO PREVENT INJURIES:

Always check all hardware for tightness before using or working around the blade. Make sure moldboard is secured with nylon insert lock nut



DANGER



TO PREVENT INJURIES:

Always keep your feet and/or legs out from under the blade while adjusting it. It is possible for the blade to fall causing injury to your feet and/or legs.

IMPORTANT:

The Rear Blade must be hitched to a tractor and raised off the ground several inches to make the following adjustments.

Blade Offset:

The blade may be offset right or left 12" .

Unbolt moldboard (item 1) from blade mount (item 2).

Using alternative holes in the moldboard, reattach moldboard to blade mount with 1/2"-13 x 1 1/4" GR5 carriage bolts (item 3), flat washers (item 4), and hex nuts (item 5). Tighten hex nuts to the correct torque.



CAUTION



TO PREVENT INJURIES:

Do not come in contact with turntables or stick objects into the turntable holes while adjusting blade offset or angling. Doing so can pinch or shear body extremities and objects.



CAUTION



TO PREVENT INJURIES:

Never angle, tilt, or offset blade into tractor tires. This can damage blade and tractor tires.

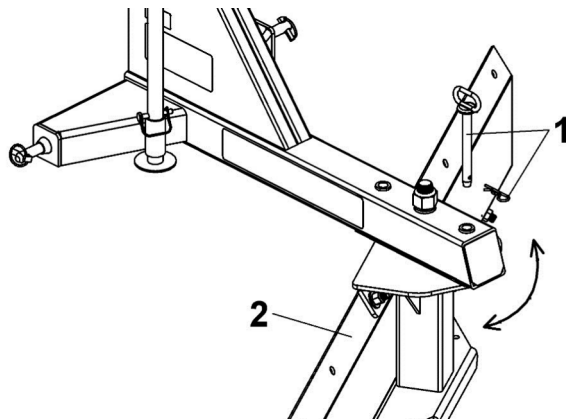
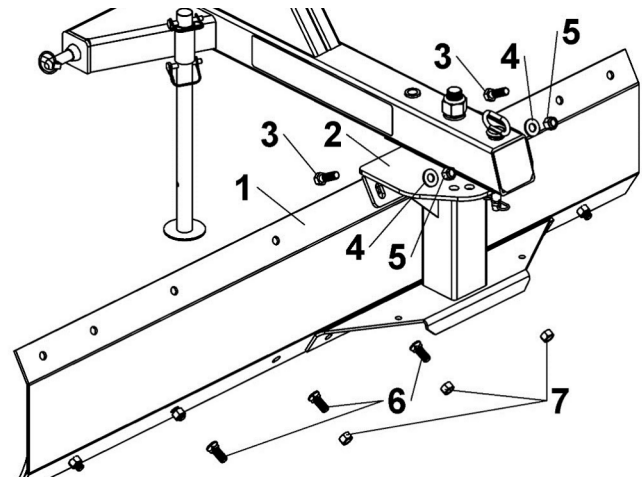


DANGER



TO PREVENT INJURIES:

Always support underside of Rear Blade with solid blocking before working beneath unit. Never work under equipment supported by hydraulics. Hydraulics can drop equipment instantly if controls are actuated even when power to hydraulics is shut off.



Blade Angling:

Holes are provided for angling the blade on each side of center in 15° increments up to 45°.

Pull pin (item 1) and rotate blade (item 2).

When blade is at desired angle, reinsert pin.

ADJUSTMENTS

Blade Reversing:

NOTE:

Rotate blade 180 degrees before using it in reverse direction. Blade must be hooked to a tractor and parking stand up to reverse blade.

Holes are provided for angling the blade in reverse position to each side of center in 15° increments up to 45°.

Pull pin (item 1) and rotate blade (item 2) around 180°.

When blade is at desired angle, reinsert pin.

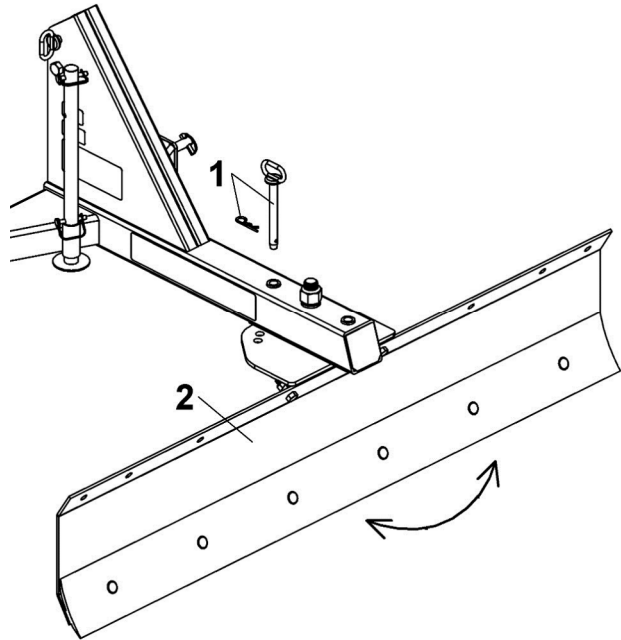


WARNING



TO PREVENT INJURIES:

Do not alter the rear blade. Altering the blade can affect its performance and reliability causing damage to the blade, tractor and/or injury. Always replace damaged parts with original manufacturer parts.



Blade Tilt

The blade may be tilted for ditching so one end is lower than the other by adjusting the tractor's lower link leveling crank.

Blade Pitch

Blade pitch can be adjusted by lengthening or shortening the tractor's top center 3-point link. Increasing blade pitch will increase blade's ability to dig.

Lengthen center 3-point link to increase blade pitch when grading while traveling forward. Shorten center 3-point link to decrease blade pitch.

The opposite is true if backfilling. Shorten center 3-point link to increase blade pitch and lengthen center 3-point link to decrease blade pitch.

To help protect the Rear Blade from becoming damaged while backfilling, lengthen tractor's center 3-point link until the blade moves across the top of the ground without forcing itself into the soil.

OPERATION

Hazard control and accident prevention are dependent upon the awareness, concern, prudence, and proper training involved in the operation, transport, storage, and maintenance of the blade. Therefore, It is absolutely essential that no one operates the Rear Blade without first having read, fully understood, and become totally familiar with the Operator's Manual.



DANGER



TO PREVENT INJURIES:

Never allow riders including children on the tractor or the rear blade. They can fall and be ran over causing serious injury or death.



DANGER



TO PREVENT INJURIES:

Always keep your feet and/or legs out from under the blade while adjusting it. It is possible for the blade to fall causing injury to your feet and/or legs.



DANGER



TO PREVENT INJURIES:

Always keep a safe distance from obstructions. The blade can extend beyond tractor tires and will make a wide swinging pattern when turning. Never hit a solid object with blade as this can damage property and cause tractor to pivot violently resulting in loss of control, serious injury, or death.



DANGER



TO PREVENT INJURIES:

Always support underside of Rear Blade with solid blocking before working beneath unit. Never work under equipment supported by hydraulics. Hydraulics can drop equipment instantly if controls are actuated even when power to hydraulics is shut off.



DANGER



TO PREVENT INJURIES:

Always check all hardware for tightness before using or working around the blade. The moldboard will fall off if blade pivot bolt or blade tilt nuts are missing.



WARNING



TO PREVENT INJURIES:

Do not allow anyone to operate the rear blade who is under the age of 16 or has not been properly trained in safe operation. Allowing someone who is too young or not properly trained to operate the rear blade could result in damage to the blade, serious bodily injury or death.



WARNING



TO PREVENT INJURIES:

Operate blade only from a tractor equipped with a ROPS in the raised position or with a ROPS cab and with seat belt securely fastened.



WARNING



TO PREVENT INJURIES:

Use the rear blade for it's intended purpose only. Do not use Rear Blade for pulling objects out of the ground, lifting objects, carrying objects, pushing other equipment, or towing other equipment. Any of the above can result in Rear Blade damage, serious bodily injury or death



WARNING



TO PREVENT INJURIES:

It is the operator's responsibility not to allow anyone near the rear blade during it's operation.



CAUTION



TO PREVENT INJURIES:

Be sure you are not working over any underground wiring, pipes or other obstructions. If there is any doubt, call your local utility services so they may determine the location to any underground utilities in the area. Be sure to ask how close you can work to the marks or flags they positioned.



CAUTION



TO PREVENT INJURIES:

Make certain parking stand is properly pinned with wire retaining pin. If not pinned properly, the Rear Blade can fall causing serious injury.



CAUTION



TO PREVENT INJURIES:

Never angle, tilt, or offset blade into tractor tires. This can damage blade and tractor tires.

OPERATION

IMPORTANT: Do not hitch Rear Blade to a tractor rated outside the recommended horsepower range. Doing so can bend and/or break the blade.

IMPORTANT: Be careful when working areas where obstructions can be hidden. Always check the area before working it and mark any potential hazards with a visible flag. Travel slowly through high risk areas and always be prepared to stop immediately should the blade make contact with a solid object.

Basic Operating Instructions

Thoroughly inspect the work area for buried utility cables, pipelines, sprinkler heads, and any unforeseen objects. Mark any potential hazards.

Place grade stakes if you intend to develop a specific grade or soil level.

Adjust blade to the desired angle, tilt, and offset position before lowering blade to the ground.

Lower blade to the ground and proceed forward at a speed of no more than 2 to 4 mph. The blade should immediately begin shaving the soil surface.

Set tractor's draft-link height control lever to the desired grade position. If blade is set at a 90 degree angle to the direction of travel, it may be necessary to raise the blade slightly so that dirt and gravel can flow out evenly under the blade as it shaves off high spots and fills in potholes or depressions.

Inspection After Hook-Up

Make the following inspections after attaching the Rear Blade to the tractor:

Inspect tractor safety equipment to make sure it is in good working condition.

Make sure all blade components are properly lubricated. See "Lubrication Points".

Check clearances between blade and tractor throughout the range of all blade motions. See "Check Interferences" for detailed instructions.

Unhooking the Rear Blade

Un-hook Rear Blade from the tractor as follows:
Park on a level solid hard surface. Place tractor gear selector in park and set park brake.

Lower parking jack and secure with hitch pin.

Lower blade and parking stand onto level ground or onto blocks supporting the unit just above ground.

Shut tractor engine off and remove key.

If needed, adjust length of upper center 3-point link until hitch pin can be removed from hitch frame.

Remove linchpins from lower hitch pins and pull hitch pins out.

Move lower 3-point arms out of the way and reinstall hitch pins, linchpins, and hairpin cotter pins in the Rear Blade hitch frame for storage.

Refer to "Long Term Storage" when storing the Rear Blade for a long time.

Rear Blade Functions

IMPORTANT: The warranty shall not apply to damage caused by misuse, abuse, or contact with obstructions.

NOTE: Place grade stakes if you intend to develop a specific grade or soil level.

Grading

Pivot moldboard to the desired angle, lower blade to the ground, and set the tractor's draft-link height control to the desired position. Proceed forward at a speed of no more than 2 to 4 mph. The blade should immediately begin shaving the surface.

A blade full of material can be raised slightly so that the material can flow out evenly under the blade to effectively shave off high spots and fill in potholes or depressions.

Loose soil can be smoothed out by pushing the soil with the back of the moldboard while backing-up.

Make sure Rear Blade does not block tractor's Slow Moving Vehicle (SMV) sign while transporting on a road. Install a SMV sign on the Rear Blade if tractor's SMV sign is blocked.

Traffic not alerted to a slow moving tractor might hit the tractor causing serious injury or death.

OPERATION

Edge Work:

If blade is wide enough, material close to fences, buildings, and other obstructions can be graded by offsetting the moldboard to the right or left beyond the tractor tire. Make certain the end of the blade is offset far enough to be visible to the operator. Always keep a safe distance away from obstructions, drive slowly when passing by them, and stay clear of them when turning. Always be aware that the blade will make a wide swinging pattern in a turn and always be ready to stop immediately. Never hit an obstruction as this can damage the blade and/or the obstruction.

Ditch Work

Fill ditches by offsetting the blade beyond the tractor wheel to keep the tractor out of the ditch. Angle the blade to move the dirt toward and into the ditch while traveling forward. Set blade depth as needed (see Grading Instructions) when setting the blade depth.

Backfilling:

Backfilling is a process where the operator turns the blade around 180° and pushes the product while backing-up. Be careful not to overstress the Rear Blade while backfilling as load forces on the blade and frame increase when backing up. To help protect the rear blade from damage, lengthen the tractor's center top link until the blade will move across the top of the ground without forcing itself into the soil, adjust the offset to be straight behind the tractor and set the blade angle at 90° (perpendicular to the mainframe). Keep the load in the center of the blade and not on the end of the blade. Don't ram a load with the blade and always operate at slow speeds when backing-up. Be ready to stop immediately if a solid object is hit. Removing snow while backing-up is especially dangerous as snow can hide solid objects and there is a tendency to drive too fast to get the snow removal job done. High speeds multiply the forces exerted on the rear blade.

TRANSPORTATION



DANGER



TO PREVENT INJURIES:

Always keep a safe distance from obstructions. The blade can extend beyond tractor tires and will make a wide swinging pattern when turning. Never hit a solid object with blade as this can damage property and cause tractor to pivot violently resulting in loss of control, serious injury or death.



DANGER



TO PREVENT INJURIES:

When traveling on public roads, use accessory lights, SMV sign, clean reflectors and other adequate devices to warn operators in other vehicles of your presence. Always comply with all federal, state, provincial and local laws.



DANGER



TO PREVENT INJURIES:

Make sure Rear Blade does not block tractor's Slow Moving Vehicle (SMV) sign while transporting on a road. Install a SMV on the rear blade if tractor's SMV sign is blocked. Traffic not alerted to a slow moving tractor might hit the tractor causing serious injury or death.



WARNING



TO PREVENT INJURIES:

Transport with rear blade centered behind the tractor. An offset blade extends past the tractor farther and carries a higher risk of hitting traffic and other obstructions that can cause serious injury or death.

Do not operate tractor with weak brakes or worn tires. Transport on roadways with blade centered behind the tractor to minimize blade overhang.

Select a safe ground speed when transporting from one area to another and be sure to reduce speed when turning.

When turning, leave enough clearance so the blade does not contact obstacles such as buildings, trees, or fences.

When traveling on roadways, transport in such a way that faster moving vehicles may pass safely. A slow moving vehicle sign should be properly displayed when traveling on public roads or right-of-ways.

Slow down if traveling on a wet slick road.

Shift to lower gear when traveling over rough or hilly terrain and when going downhill.

Watch out for fences, trees, rocks, wires while operating and transporting the attachment.

Turning the tractor too tight may cause hitched accessories to ride up on the wheels. This could result in injury and/or equipment damage.

MAINTENANCE & STORAGE

ALWAYS PRACTICE SAFE MAINTENANCE



WARNING



TO PREVENT INJURIES:

Park the vehicle on a flat surface in a well ventilated area.

Disengage the P.T. O.

Apply parking brake.

Stop the engine and remove the ignition key.

Wait until all moving parts have stopped before leaving the driver's seat.

Always understand the procedures before doing any work. Use the proper tools and equipment, refer to the Owner's manual for additional information.

Always work in a clean dry area.

Lower the attachment to the ground, put tractor in park, turn off the engine and remove key before doing any maintenance.

Let the accessory cool before doing any work on it.

Disconnect the battery ground cable(-) before servicing or adjusting electrical systems or before welding on the accessory.

Do not grease or oil the accessory while it is in operation unless otherwise specified.

Inspect all parts. Make sure parts are in good condition & properly installed.

Remove any build-up of grease, oil or debris.

Remove all tools and unused parts from accessory before operating.

Proper servicing and adjustments are the key to long life of any accessory. With careful inspection and routine maintenance you can avoid costly repairs and



DANGER



TO PREVENT INJURIES:

Always check all hardware for tightness before using or working around the blade. The moldboard will fall off if blade pivot nut is missing.

LUBRICATION POINTS

Grease the moldboard and blade when storing for an extended period of time.

Type of lubrication: Multi-purpose grease

Quantity: Coat Generously

LONG TERM STORAGE

Clean, inspect, service and make necessary repairs to the rear blade when parking it for long periods and when parking it at end of working season. This will ensure that the blade is ready for use next time you need it.



DANGER



TO PREVENT INJURIES:

Always support underside of rear blade with solid blocking before working beneath unit. Never work under equipment supported by hydraulics. Hydraulics can drop equipment instantly if controls are actuated even when power to hydraulics is shut off.

Clean off any dirt that may have accumulated on the rear blade and thoroughly wash surfaces with a garden hose.

Inspect blade for loose, damaged, or worn parts and hardware. Adjust and tighten loose parts. When needed replace parts with genuine manufacturer's parts.

Repaint parts where paint is worn or scratched to prevent rust.

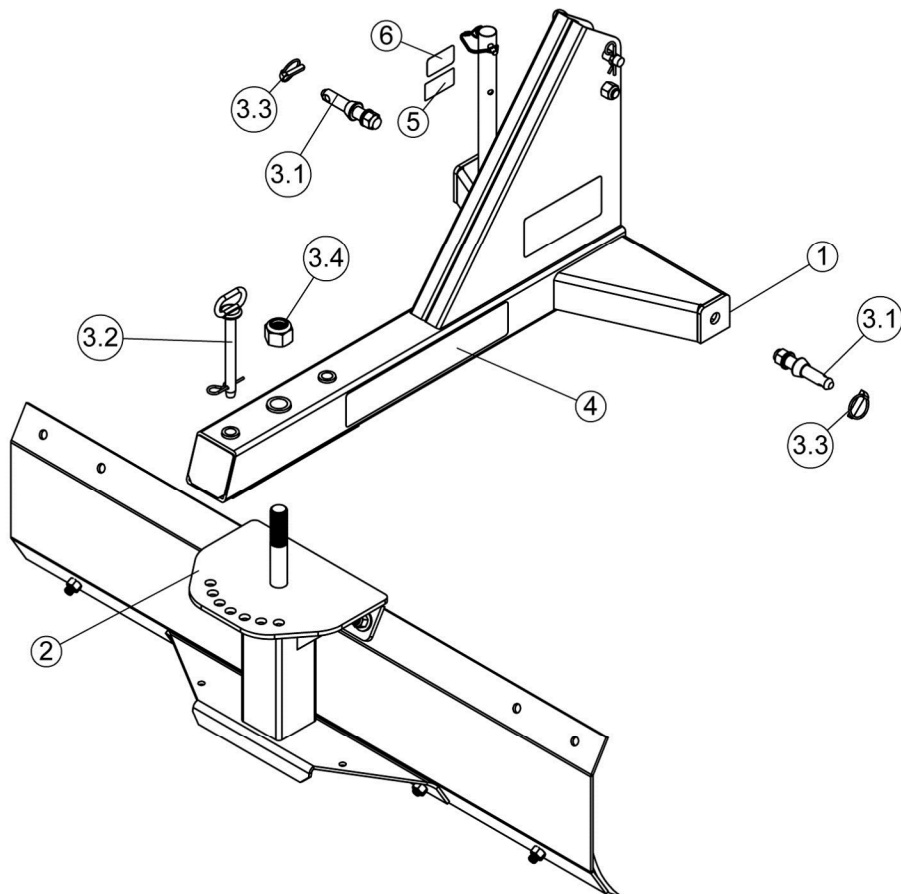
Replace all damaged or missing decals.

Lubricate as noted under Lubrication Points.

A coating of oil or grease may be applied to the moldboard and blade to minimize oxidation.

Store rear blade on a level surface in a clean dry place. Inside storage will reduce maintenance and make for a longer life span.

NOMENCLATURE ET LISTE DES PIÈCES / PARTS BREAKDOWN & PART LIST
 Lame arrière usage régulier 5' #BBLST5
 Standard duty rear blade 5' #BBLST5

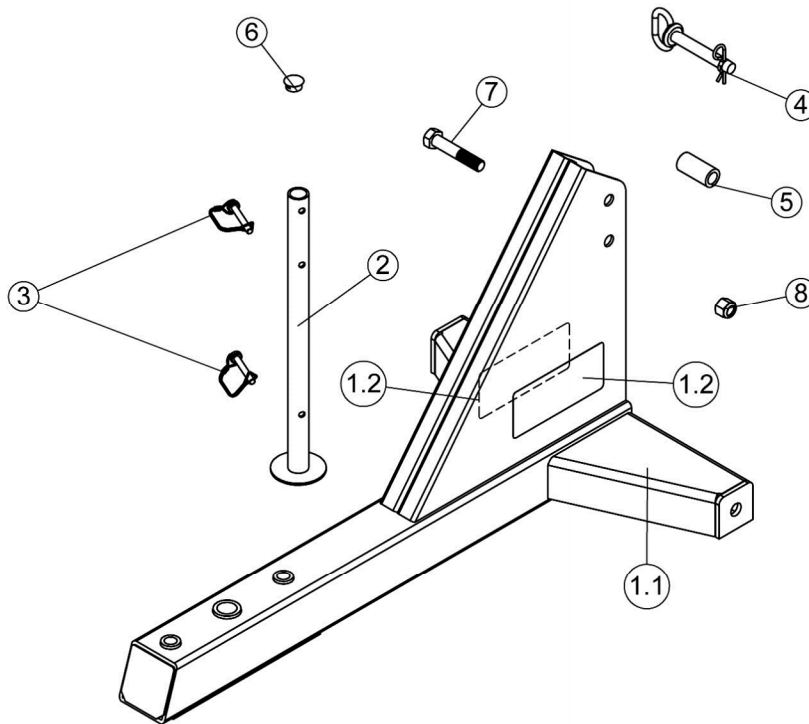


NOMENCLATURE ET LISTE DES PIÈCES / PARTS BREAKDOWN & PART LIST
 Lame arrière usage régulier 5' #BBLST5
 Standard duty rear blade 5' #BBLST5

REF.	ENGLISH DESCRIPTION	DESCRIPTION FRANÇAISE	QTY.	PART#
1	Support frame assembly	Chassis de support assemblé	1	501205
2	Standard duty rear blade 5' assembly	Lame arrière usage régulier 5' assemblé	1	501202
3	Hardware Bag	Sac de Qunicaillerie	1	107790
3.1	Pin	Goupille	2	106875
3.2	Pin with hair pin 4mm	Goupille avec goupille a ressort 4mm	1	107788
3.3	Lynch pin	Goupille à anneau	2	106894
3.4	Nylon Insert lock Nut 1-1/4" n.c.	Écrou à garniture de nylon 1-1/4" n.c.	1	O/L (335NC.P_1-1_4)
4	Mahindra Implement small	Décalque Mahindra Implement petit	2	106473
5	Serial number	Numéro de série	1	REF.
6	Made in Canada decal	Décalque Fabriqué au Canada	1	REF.

O/L = Obtain Locally / Obtenir localement

NOMENCLATURE ET LISTE DES PIÈCES / PARTS BREAKDOWN & PART LIST
Chassis de support assemblé #501205
Support frame assembly #501205



NOMENCLATURE ET LISTE DES PIÈCES / PARTS BREAKDOWN & PART LIST
Chassis de support assemblé #501205
Support frame assembly #501205

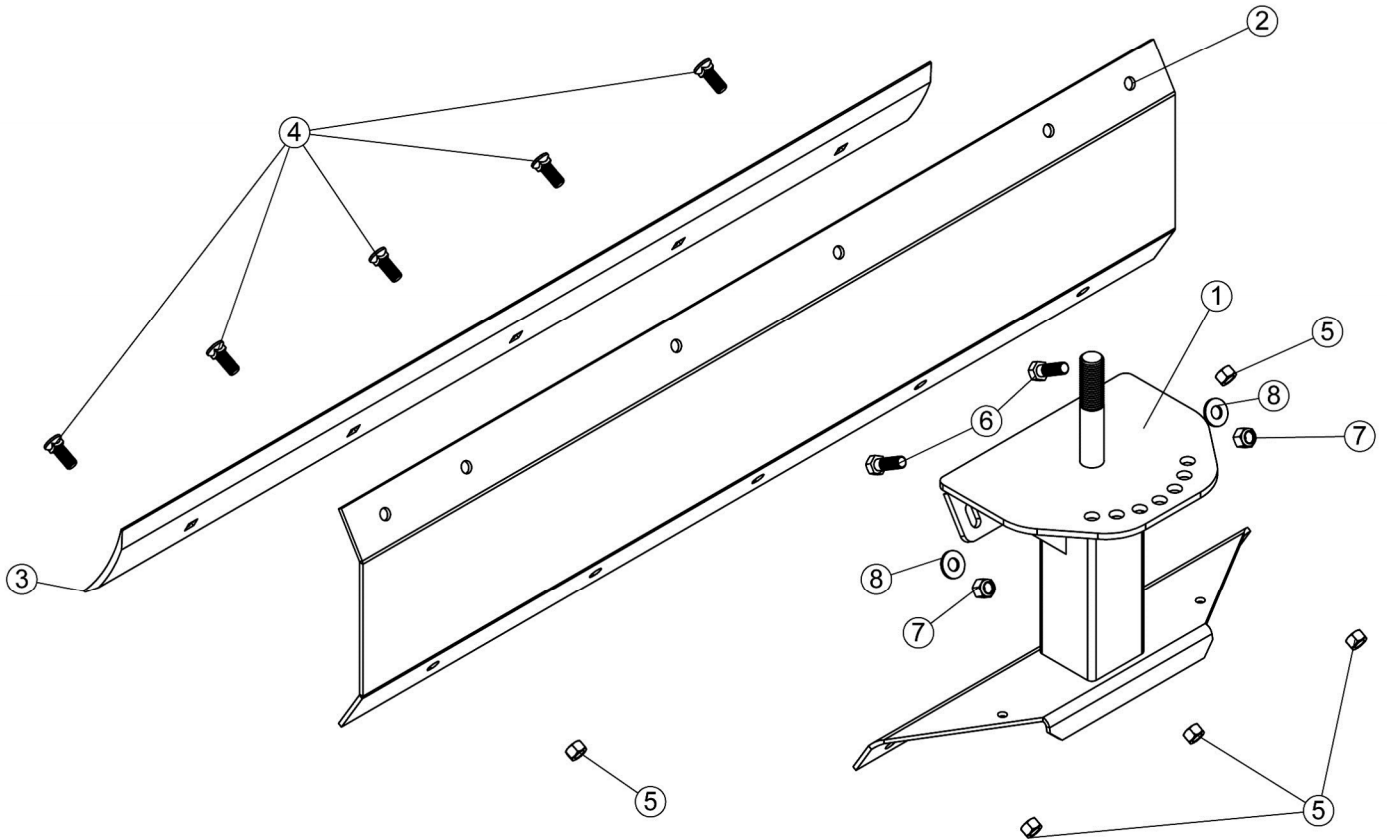
REF.	ENGLISH DESCRIPTION	DESCRIPTION FRANÇAISE	QTY.	PART#
1	Support frame #107776 w/ safety decals	Châssis de support #107776 a/ déc. de séc.	1	107789-R03
1.1	Support frame	Chassis de support	1	107776-R03
1.2	Warning implement decal	Décalque avertissement accessoire	2	107650
2	Parking stand	Pied de stationnement	1	107778
3	Lock pin	Tige de verrouillage	2	103563
4	Pin with hair pin 4mm	Goupille avec goupille à ressort 4mm	1	106736
5	Sleeve	Douille	1	107786
6	Plug	Bouchon	1	107787
7	Hex. bolt 3/4" n.c. x 4" GR5	Boulon hex. 3/4" n.c. x 4" GR5	1	O/L (300NC.5P_3-4x4)
8	Nylon Insert lock Nut 3/4" n.c.	Écrou à garniture de nylon 3/4" n.c.	1	O/L (335NC.P_3-4)

O/L = Obtain Locally / Obtenir localement

NOMENCLATURE ET LISTE DES PIÈCES / PARTS BREAKDOWN & PART LIST

Lame arrière usage régulier 5' assemblé #501202

Standard duty rear blade 5' assembly #501202



NOMENCLATURE ET LISTE DES PIÈCES / PARTS BREAKDOWN & PART LIST

Lame arrière usage régulier 5' assemblé #501202

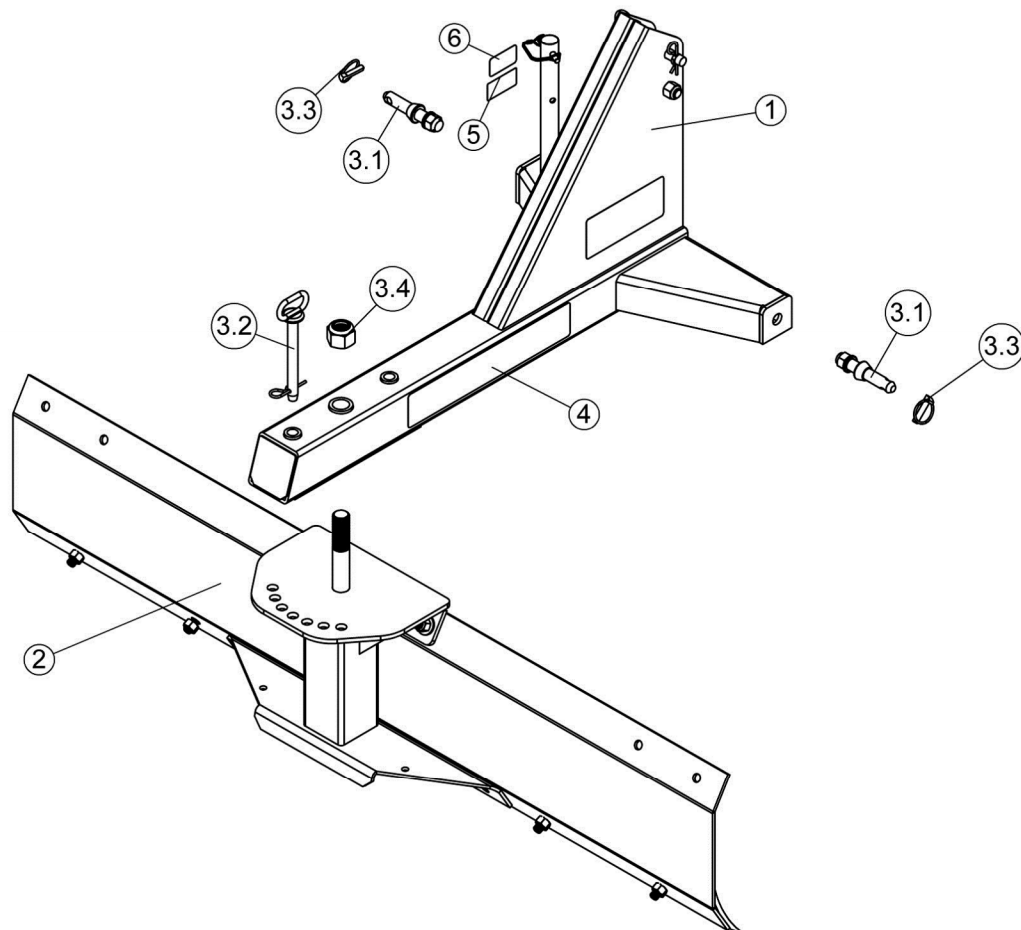
Standard duty rear blade 5' assembly #501202

REF.	ENGLISH DESCRIPTION	DESCRIPTION FRANÇAISE	QTY.	PART#
1	Blade support	Support de lame	1	107777
2	Blade 5'	Lame 5'	1	107779
3	Grader blade 3/8" x 5'	Lame de niveleuse 3/8" x 5'	1	107618
4	Plow bolt 5/8" n.c. x 1 3/4" GR5	Boulon de charrue 5/8" n.c. x 1 3/4" GR5	5	O/L (321NC.5P_5-8x1-3-4)
5	Hex. nut 5/8" n.c.	Écrou hex. 5/8" n.c.	5	O/L (330NC.P_5-8)
6	Hex. bolt 5/8" n.c. x 2" GR5	Boulon hex 5/8" n.c. x 2" GR5	2	O/L (300NC.5P_5-8x2)
7	Nylon Insert lock Nut 5/8" n.c.	Écrou à garniture de nylon 5/8" n.c.	2	O/L (335NC.P_5-8)
8	Flat washer 11/16" hole	Rondelle plate 11/16" trou	2	O/L (360.P_11-16T)

O/L = Obtain Locally / Obtenir localement

NOMENCLATURE ET LISTE DES PIÈCES / PARTS BREAKDOWN & PART LIST

Lame arrière usage régulier 6' #BBLST6
Standard duty rear blade 6' #BBLST6



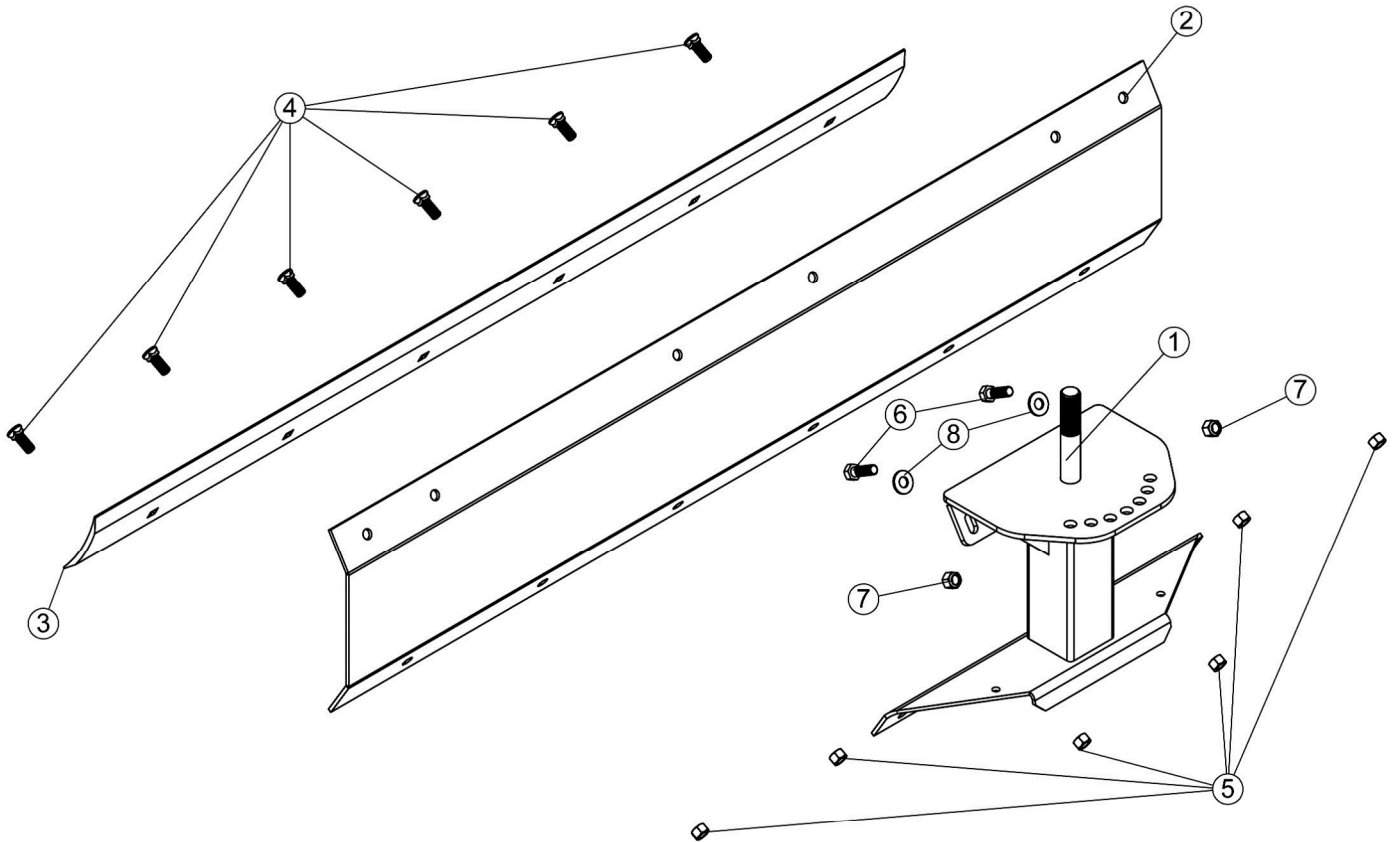
NOMENCLATURE ET LISTE DES PIÈCES / PARTS BREAKDOWN & PART LIST

Lame arrière usage régulier 6' #BBLST6
Standard duty rear blade 6' #BBLST6

REF.	ENGLISH DESCRIPTION	DESCRIPTION FRANÇAISE	QTY.	PART#
1	Support frame assembly	Chassis de support assemblé	1	501205
2	Standard duty rear blade 6' assembly	Lame arrière usage régulier 6' assemblé	1	501203
3	Hardware Bag	Sac de Qunicaillerie	1	107790
3.1	Pin	Goupille	2	106875
3.2	Pin with hair pin 4mm	Goupille avec goupille a ressort 4mm	1	107788
3.3	Lynch pin	Goupille à anneau	2	106894
3.4	Nylon Insert lock Nut 1-1/4" n.c.	Écrou à garniture de nylon 1-1/4" n.c.	1	O/L (335NC.P_1-1_4)
4	Mahindra Implement small	Décalque Mahindra Implement petit	2	106473
5	Serial number	Numéro de série	1	REF.
6	Made in Canada decal	Décalque Fabriqué au Canada	1	REF.

O/L = Obtain Locally / Obtenir localement

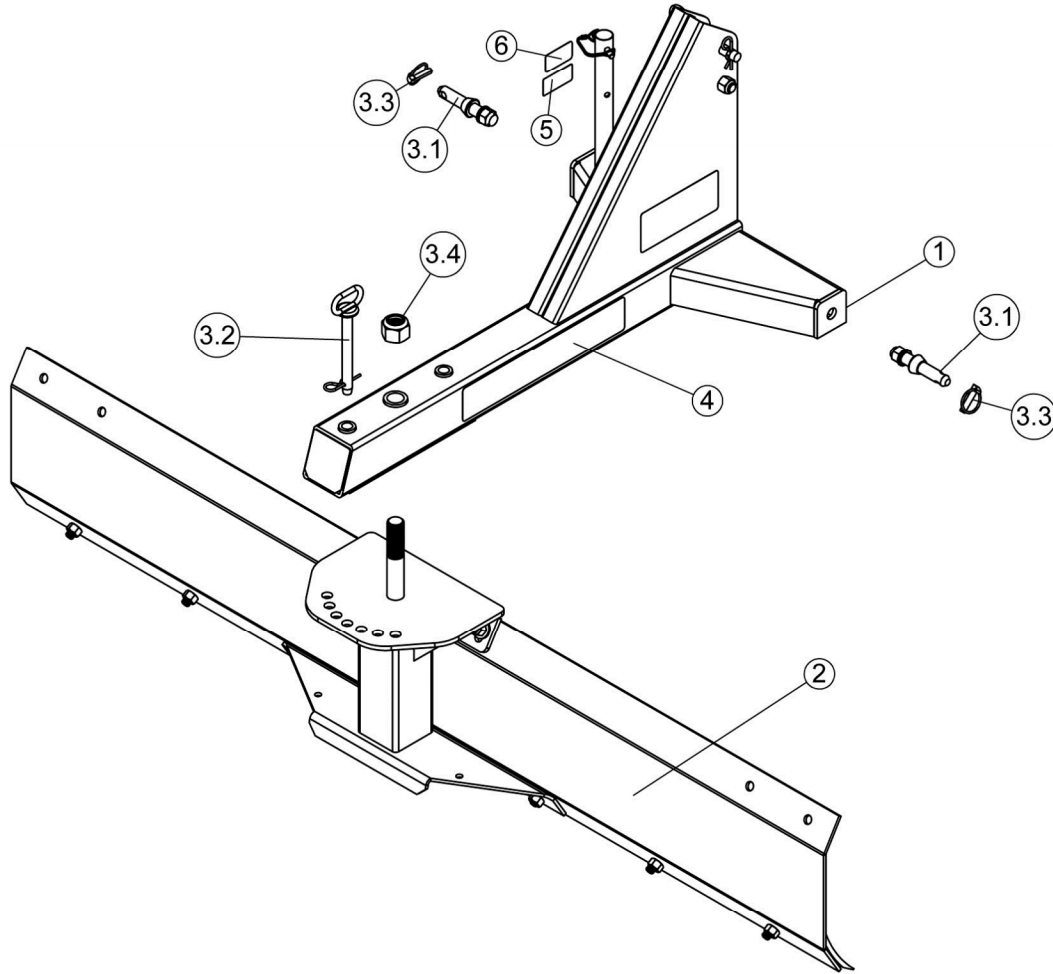
NOMENCLATURE ET LISTE DES PIÈCES / PARTS BREAKDOWN & PART LIST
 Lame arrière usage régulier 6' assemblé #501203
 Standard duty rear blade 6' assembly #501203



NOMENCLATURE ET LISTE DES PIÈCES / PARTS BREAKDOWN & PART LIST
 Lame arrière usage régulier 6' assemblé #501203
 Standard duty rear blade 6' assembly #501203

REF.	ENGLISH DESCRIPTION	DESCRIPTION FRANÇAISE	QTY.	PART#
1	Blade support	Support de lame	1	107777
2	Blade 6'	Lame 6'	1	107780
3	Grader blade 3/8" x 6'	Lame de niveleuse 3/8" x 6'	1	107620
4	Plow bolt 5/8" n.c. x 1 3/4" GR5	Boulon de charrue 5/8" n.c. x 1 3/4" GR5	6	O/L (321NC.5P_5-8x1-3-4)
5	Hex. nut 5/8" n.c.	Écrou hex. 5/8" n.c.	6	O/L (330NC.P_5-8)
6	Hex. bolt 5/8" n.c. x 2" GR5	Boulon hex 5/8" n.c. x 2" GR5	2	O/L (300NC.5P_5-8x2)
7	Nylon Insert lock Nut 5/8" n.c.	Écrou à garniture de nylon 5/8" n.c.	2	O/L (335NC.P_5-8)
8	Flat washer 11/16" hole	Rondelle plate 11/16" trou	2	O/L (360.P_11-16T)

NOMENCLATURE ET LISTE DES PIÈCES / PARTS BREAKDOWN & PART LIST
Lame arrière usage régulier 7' #BBLST7
Standard duty rear blade 7' #BBLST7

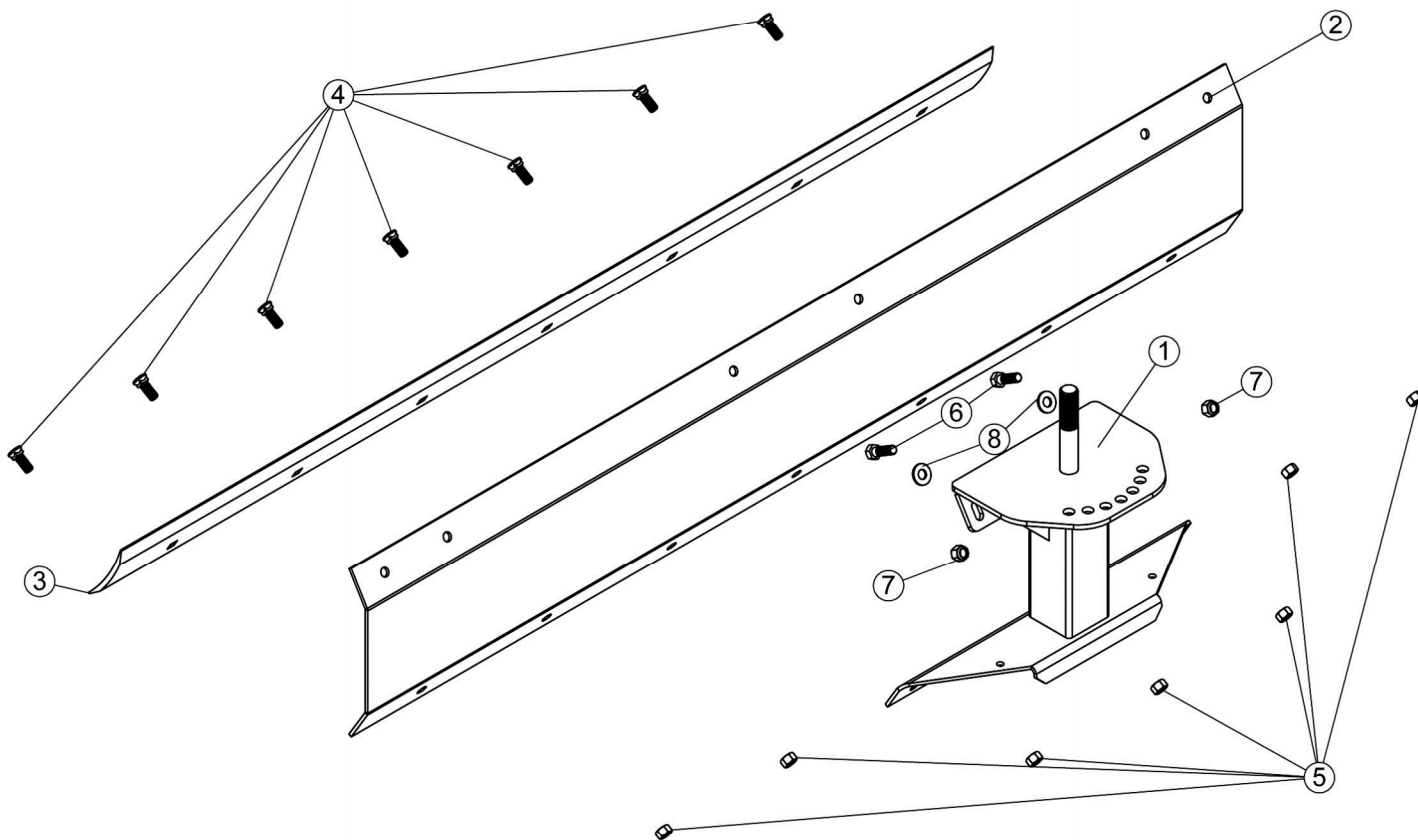


NOMENCLATURE ET LISTE DES PIÈCES / PARTS BREAKDOWN & PART LIST
Lame arrière usage régulier 7' #BBLST7
Standard duty rear blade 7' #BBLST7

REF.	ENGLISH DESCRIPTION	DESCRIPTION FRANÇAISE	QTY.	PART#
1	Support frame assembly	Chassis de support assemblé	1	501205
2	Standard duty rear blade 7' assembly	Lame arrière usage régulier 7' assemblé	1	501204
3	Hardware Bag	Sac de Qunicallerie	1	107790
3.1	Pin	Goupille	2	106875
3.2	Pin with hair pin 4mm	Goupille avec goupille a ressort 4mm	1	107788
3.3	Lynch pin	Goupille à anneau	2	106894
3.4	Nylon Insert lock Nut 1-1/4" n.c.	Écrou à garniture de nylon 1-1/4" n.c.	1	O/L (335NC.P_1-1_4)
4	Mahindra Implement small	Décalque Mahindra Implement petit	2	106473
5	Serial number	Numéro de série	1	REF.
6	Made in Canada decal	Décalque Fabriqué au Canada	1	REF.

O/L = Obtain Locally / Obtenir localement

NOMENCLATURE ET LISTE DES PIÈCES / PARTS BREAKDOWN & PART LIST
 Lame arrière usage régulier 7' assemblé #501204
 Standard duty rear blade 7' assembly #501204



NOMENCLATURE ET LISTE DES PIÈCES / PARTS BREAKDOWN & PART LIST
 Lame arrière usage régulier 7' assemblé #501204
 Standard duty rear blade 7' assembly #501204

REF.	ENGLISH DESCRIPTION	DESCRIPTION FRANÇAISE	QTY.	PART#
1	Blade support	Support de lame	1	107777
2	Blade 7'	Lame 7'	1	107781
3	Grader blade 3/8" x 7'	Lame de niveleuse 3/8" x 7'	1	107785
4	Plow bolt 5/8" n.c. x 1 3/4" GR5	Boulon de charrue 5/8" n.c. x 1 3/4" GR5	7	O/L (321NC.5P_5-8x1-3-4)
5	Hex. nut 5/8" n.c.	Écrou hex. 5/8" n.c.	7	O/L (330NC.P_5-8)
6	Hex. bolt 5/8" n.c. x 2" GR5	Boulon hex 5/8" n.c. x 2" GR5	2	O/L (300NC.5P_5-8x2)
7	Nylon Insert lock Nut 5/8" n.c.	Écrou à garniture de nylon 5/8" n.c.	2	O/L (335NC.P_5-8)
8	Flat washer 11/16" hole	Rondelle plate 11/16" trou	2	O/L (360.P_11-16T)

O/L = Obtain Locally / Obtenir localement

TORQUE SPECIFICATION TABLE

GENERAL TORQUE SPECIFICATION TABLE USE THE FOLLOWING TORQUES WHEN SPECIAL TORQUES ARE NOT GIVEN

NOTE: These values apply to fasteners as received from supplier, dry or when lubricated with normal oil. They do not apply if special graphited or moly disulphide greases or other extreme pressure lubricants are used. This applies to both UNF and UNC threads.

* Thick nuts must be used with grade 8 bolts

SEE Grade No.		2				5				8 *			
BOLT HEAD IDENTIFICATION MARKS AS PER GRADE NOTE MANUFACTURING MARKS WILL VARY		TORQUE				TORQUE				TORQUE			
BOLT SIZE		FOOT POUNDS		NEW TON-METERS		FOOT POUNDS		NEW TON-METERS		FOOT POUNDS		NEW TON-METERS	
Inches	Millimetre	Min.	Max.	Min.	Max.	Min.	Max.	Min.	Max.	Min.	Max.	Min.	Max.
1/4"	6.35	5	6	6.8	8.13	9	11	12.2	14.9	12	15	16.3	30.3
5/16"	7.94	10	12	13.6	16.3	17	20.5	23.1	27.8	24	29	32.5	39.3
3/8"	9.53	20	23	27.1	31.2	35	42	47.5	57	45	54	61	73.2
7/16"	11.11	30	35	40.7	47.4	54	64	73.2	86.8	70	84	94.9	113.9
1/2"	12.7	45	52	61	70.5	80	96	108.5	130.2	110	132	149.2	179
9/16"	14.29	65	75	88.1	101.6	110	132	149.2	179	160	192	217	260.4
5/8"	15.88	95	105	128.7	142.3	150	180	203.4	244.1	220	264	298.3	358
3/4"	19.05	150	185	203.3	250.7	270	324	366.1	439.3	380	456	515.3	618.3
7/8"	22.23	160	200	216.8	271	400	480	542.4	650.9	600	720	813.6	976.3
1"	25.4	250	300	338.8	406.5	580	696	786.5	943.8	900	1080	1220.4	1464.5

METRIC BOLT TORQUE SPECIFICATIONS							
		COARSE THREAD			FINE THREAD		
Size Screw	Grade No.	Pitch (mm)	Foot Pounds	Newton-Meters	Pitch (mm)	Foot Pounds	Newton-Meters
M6	4T	1.00	3.6 - 5.8	4.9 - 7.9	-	-	-
	7T		5.8 - 9.4	7.9 - 12.7		-	-
	8T		7.2 - 10	9.8 - 13.6		-	-
M8	4T	1.25	7.2 - 14	9.8 - 19	1.00	12 - 17	16.3 - 23
	7T		17 - 22	23 - 29.8		19 - 27	25.7 - 36.6
	8T		20 - 26	27.1 - 35.2		22 - 31	29.8 - 42
M10	4T	1.50	20 - 25	27.1 - 33.9	1.25	20 - 29	27.1 - 39.3
	7T		34 - 40	46.1 - 54.2		35 - 47	47.4 - 63.7
	8T		38 - 46	51.5 - 62.3		40 - 52	54.2 - 70.5
M12	4T	1.75	28 - 34	37.9 - 46.1	1.25	31 - 41	42 - 55.6
	7T		51 - 59	69.1 - 79.9		56 - 68	75.9 - 92.1
	8T		57 - 66	77.2 - 89.4		62 - 75	84 - 101.6
M14	4T	2.00	49 - 56	66.4 - 75.9	1.50	52 - 64	70.5 - 86.7
	7T		81 - 93	109.8 - 126		90 - 106	122 - 143.6
	8T		96 - 109	130.1 - 147.7		107 - 124	145 - 168
M16	4T	2.00	67 - 77	90.8 - 104.3	1.50	69 - 83	93.5 - 112.5
	7T		116 - 130	157.2 - 176.2		120 - 138	162.6 - 187
	8T		129 - 145	174.8 - 196.5		140 - 158	189.7 - 214.1
M18	4T	2.00	88 - 100	119.2 - 136	1.50	100 - 117	136 - 158.5
	7T		150 - 168	203.3 - 227.6		177 - 199	239.8 - 269.6
	8T		175 - 194	237.1 - 262.9		202 - 231	273.7 - 313
M20	4T	2.50	108 - 130	146.3 - 176.2	1.50	132 - 150	178.9 - 203.3
	7T		186 - 205	252 - 277.8		206 - 242	279.1 - 327.9
	8T		213 - 249	288.6 - 337.4		246 - 289	333.3 - 391.6



Mahindra

IMPLEMENTS

www.mahindrausa.com

IMPRIMÉ AU CANADA
PRINTED IN CANADA